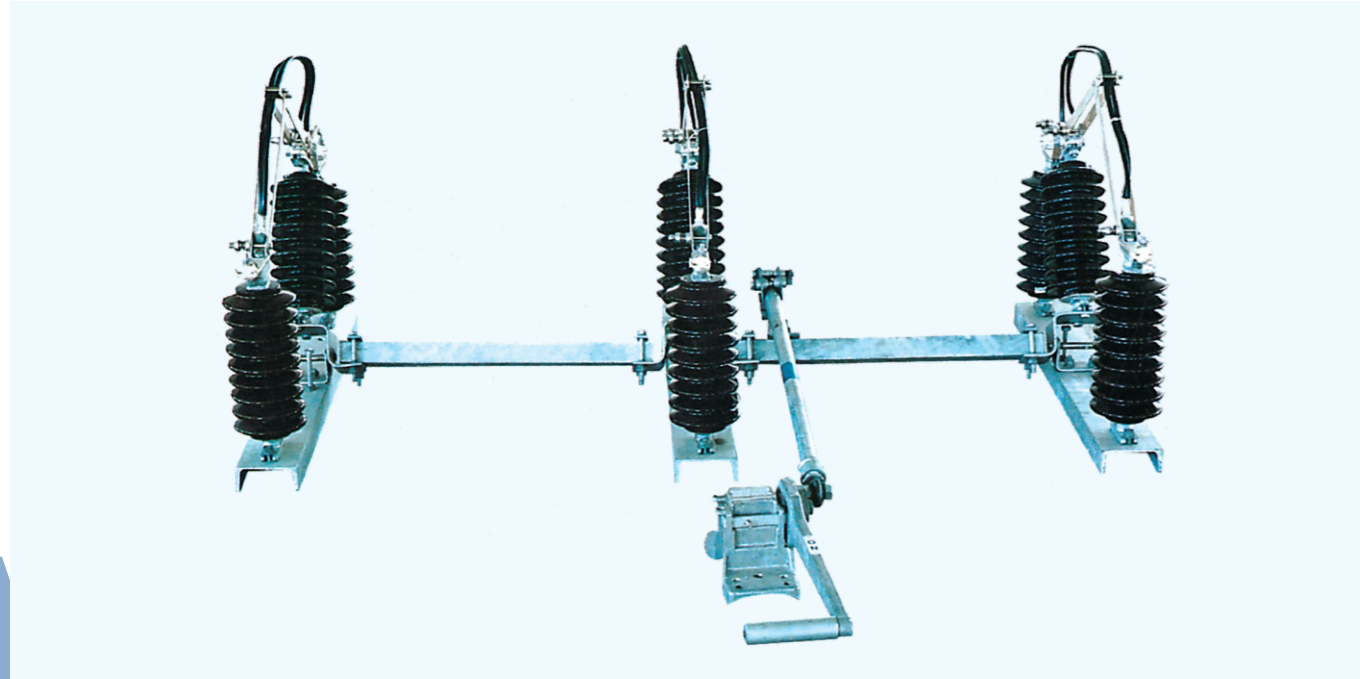
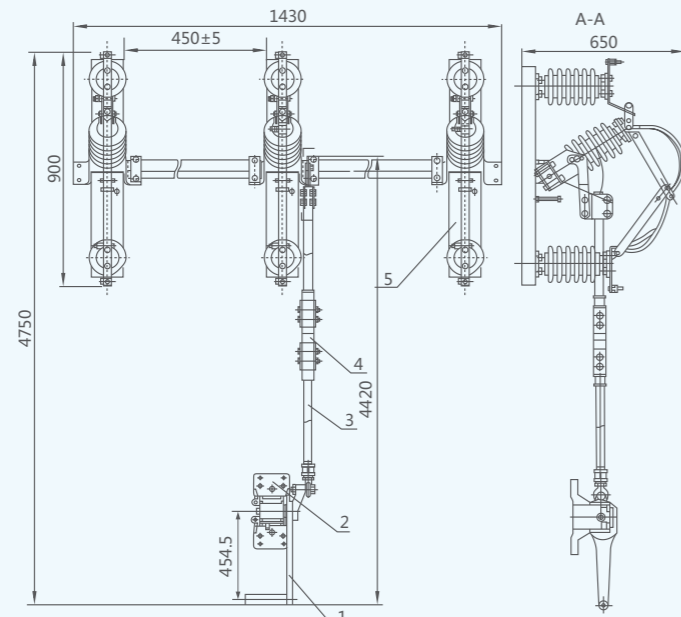


RH-B High-voltage Disconnect Switch

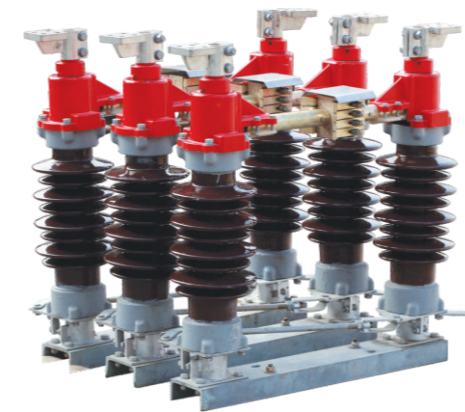


Outline and Mounting Dimensions



RH-B 11kV-33kV

Type	Rated voltage(kV)	Rated current(A)	4S heat steady current (A)	Shock voltage(A)	Impulse withstand voltage(kV)	Power-frequency withstand voltage(kV)
RH-B	11	400	12500	31500	95	42
RH-B	33	600	12500	31500	195	80

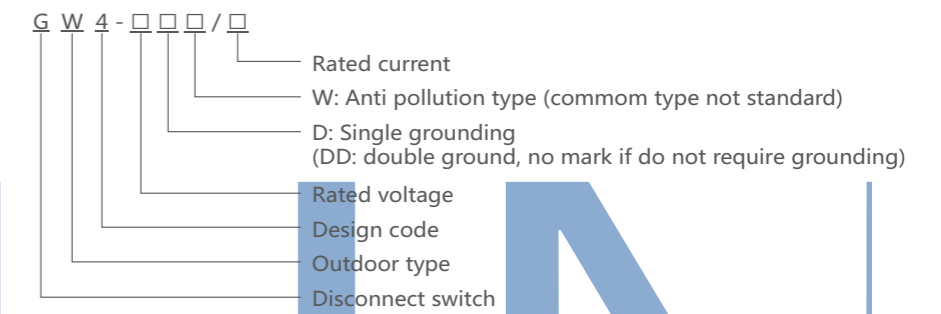


GW4

General Introduction

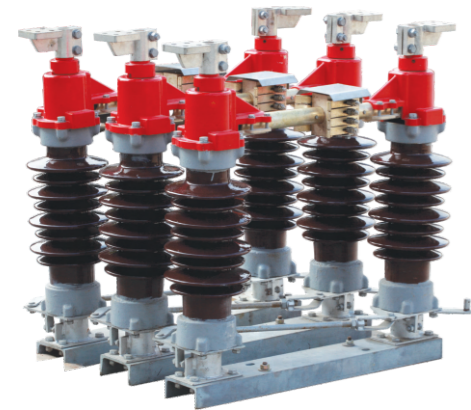
GW4-12(40.5) outdoor AC H.V. disconnect switch (disconnect switch for short) is used to open and close circuit with voltage but no-load 50/60Hz,12(40.5)kV power system.It accords with standards of IEC129-1984 AC Disconnect Switch and Earthing Switch and GB1985 and other relative standards.

Model and Meaning



Technical Specification

Item	Parameters					
	GW4-40.5	GW4-72.5	GW4-126	GW4-126G	GW4-145	
Rated voltage	40.5	72.5	126	126	145	
Rated current	630 1250 2000 2500	630 1250 2000 2500 4000	630 1250 2000 2500	630 1250	1250 2000 2500	
Rated short-time withstand current (RMS)	20 31.5 40(46)	20 31.5 40(46)	20 31.5 40(46)	20 31.5	20 31.5 40(46)	
Rated peak withstand current (peak)	50 80 100(104)	50 80 100(104)	50 80 100(104)	50 80	50 80 100(104)	
Rated short-time withstand voltage (effective value)	To the ground	80	140	185(230)	185	375
	Fracture	110	160	210(265)	210	315
Rated lightning impulse withstand voltage (peak)	To the ground	185	325	450(550)	450	650
	Fracture	215	375	520(630)	550	750
Wiring terminal rated the horizontal tension	490(735)	735	735	735	960	
Weight of single pole	80	200	240	300	300	

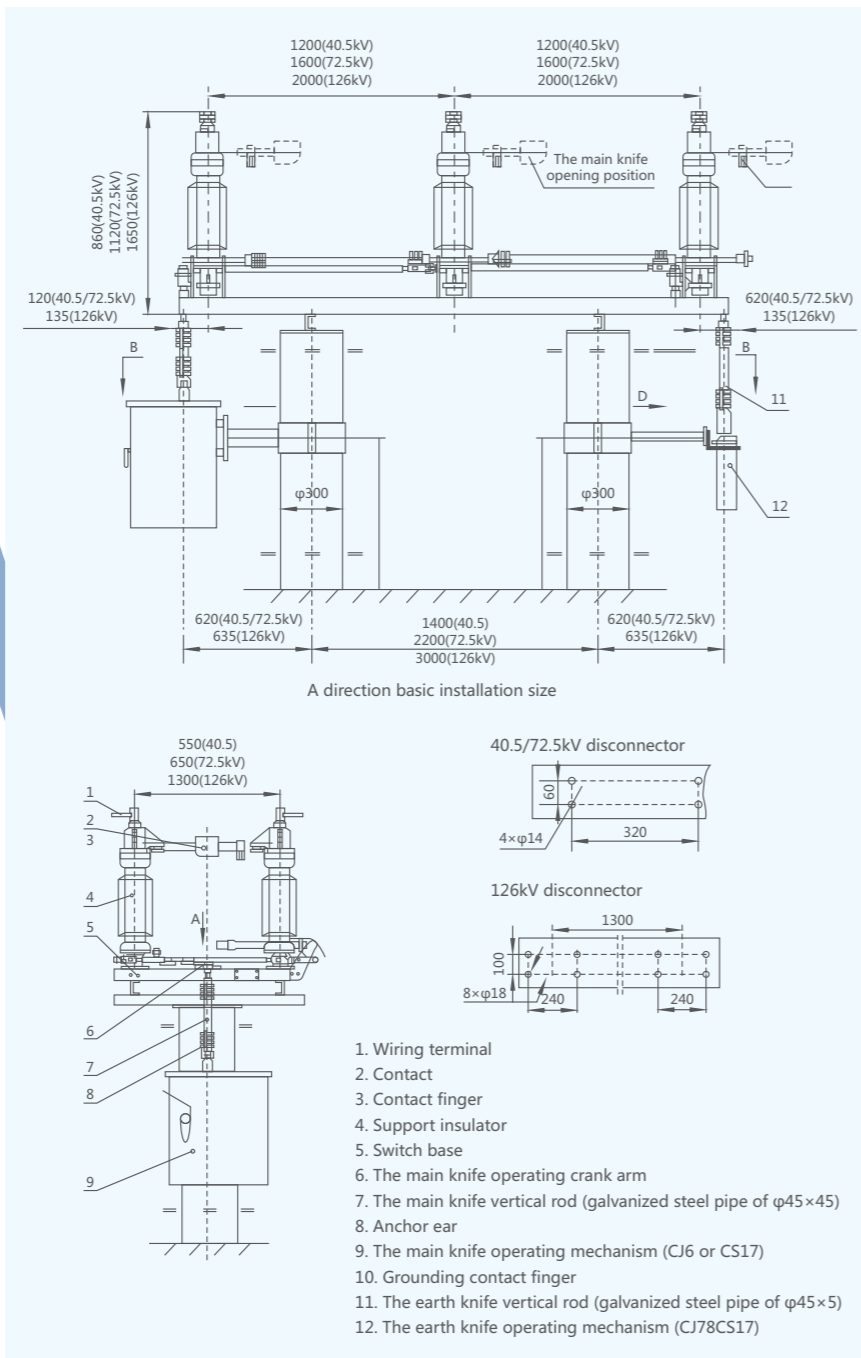


GW4

Working Conditions

1. Ambient temperature: upper limit +40°C, lower limit -30°C
2. Altitude: no more than 3000m;
3. Wind speed: no more than 35m/s;
4. Earthquake intensity: do not exceed 8 degree;
5. Pollution level: no more than III class
6. No severe vibration, no corrosive gas, no fire, no explosion danger place.

Outline and Mounting Dimensions

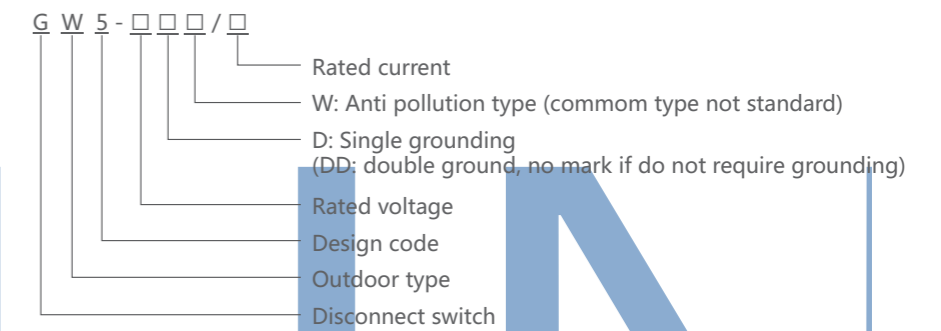


GW5

General Introduction

GW5-40.5/72.5/126/145 outdoor H.V. disconnect switch is used to make and break H.V. circuit of rated voltage 40.5kV, 72.5kV, 126/145kV, AC 50/60Hz system. It is able to open and close small capacitance and inductive H.V. Switches, GB1986 AC H.V. Disconnect Switch and Earthing Switch and IEC60694&GB/T11022 Common technical requirements of H.V. switchgear and control equipment.

Model and Meaning



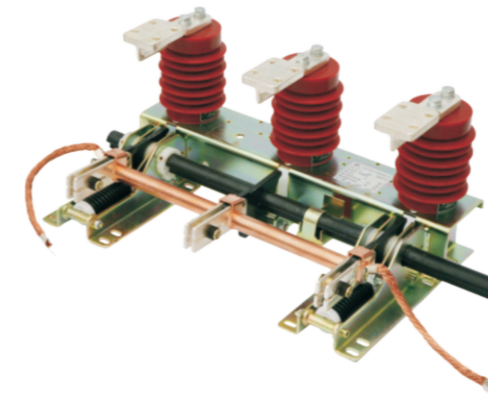
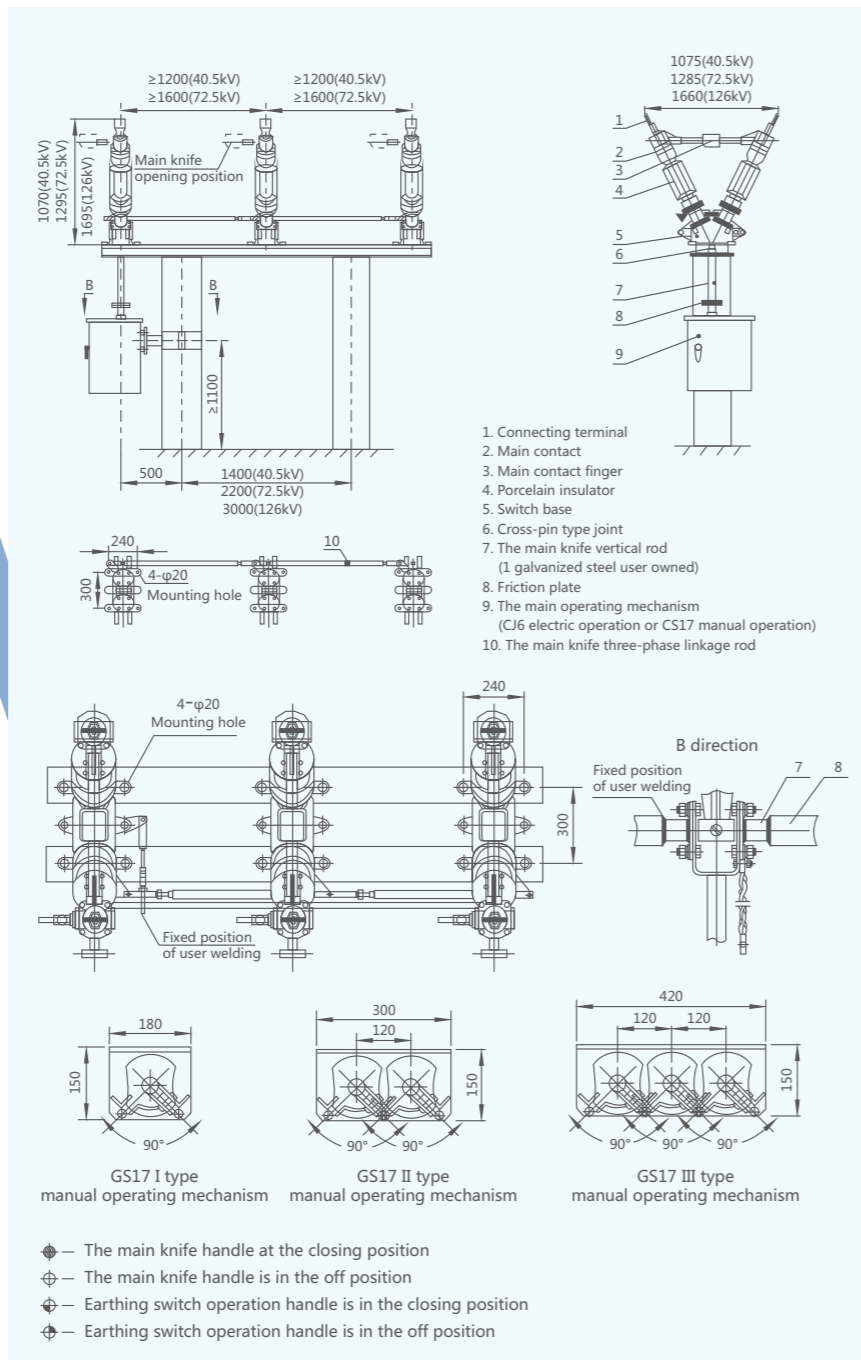
Technical Specification

Item	Unit	Parameters			
		GW5-40.5	GW5-72.5	GW5-126	GW5-145
Voltage, current parameters					
Rated voltage	kV	40.5	72.5	126	145
Rated current	A	630/1250/1600/2000			
Rated frequency	Hz	50			
Disconnecter	Rated peak withstand current	kA 50/80/100			
	Rated short-time withstand current	kA 20/31.5/40			
	Rated short circuit duration	s 4			
I type earth knife	Rated peak withstand current	kA 25			
	Rated short-time withstand current	kA 10			
	Rated short circuit duration	s 4			
II type earth knife	Rated peak withstand current	kA 100			
	Rated short-time withstand current	kA 40			
	Rated short circuit duration	s 2			

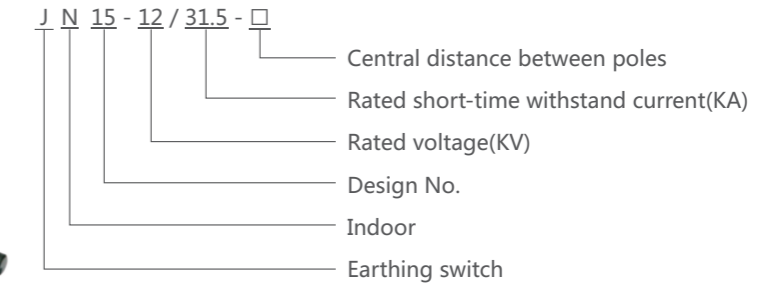
Working Conditions

1. The ambient temperature: upper limit +40°C, lower limit -40 °C;
2. Altitude: no more than 3000m;
3. Wind speed: not more than 35m/s;
4. Earthquake intensity: do not exceed 8 degree;
5. Pollution level: no more than III;
6. No severe vibration, no corrosive gas, no fire, no explosion danger place.

Outline and Mounting Dimensions



Model and Meaning



General Introduction

JN15-12/31.5 series indoor earthing switch is a new design and improved product of our company according to the ES1 type, suitable with electric power system with 3-12KV, Three-phase, AC 50(60)Hz, support with various kinds of HV switchgear and as earthing protection. It is manufactured comply with GB1985-2004 and IEC129 standard.

Working Conditions

1. Ambient temperature:-10~+40°C
2. Altitude: ≤1000m (sensor height:140mm)
3. Relative humidity: Day average relative humidity ≤95%
Month average relative humidity ≤90%
4. Earthquake intensity: ≤8degree
5. Dirtiness degree: II

Technical Specification

Item	Units	Data	
Rated voltage	kV	12	
Rated short time withstand current	kA	31.5	
Rated short circuit withstand time	s	4	
Rated short circuit making current	kA	80	
Rated peak withstand current	kA	80	
Rated insulation level	1min power frequency withstand voltage	kV	42
	Lightning Impulse withstand voltage	kV	75
Mechanism life	time	2000	